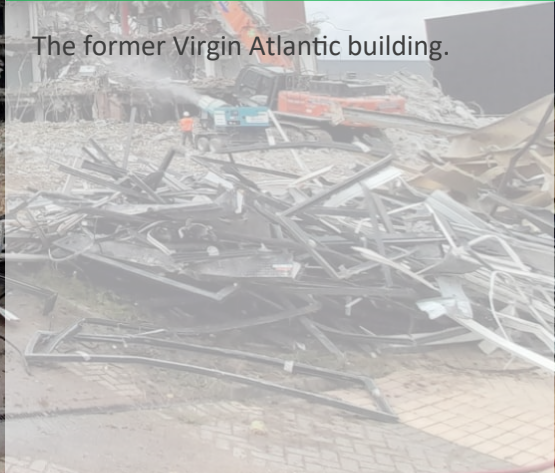




Client: RB Gatwick

Contract Period: 24 Weeks

Overview:



The former Virgin Atlantic building.

CASE STUDY

Challenges

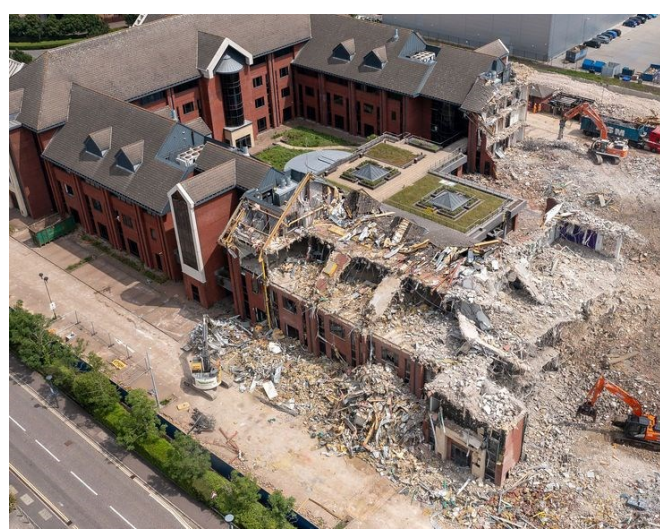
Sitting in the middle of a lively business park was this large concrete framed structure, built in 2001, with a steel framed roof. It was surrounded by blue chip companies, meaning the management of traffic in and out was a big concern, along with dust.

Actions

A detailed Method Statement was created including a traffic management plan to show how traffic would move in and out of the site. This was sent to all incoming contractors prior to arriving. We also developed a dust management plan that we implemented during the structural demolition and crushing operations.

Results

Over 98% of the project was recycled, leaving the site completely clear for the incoming contractor.



Contact Us

Shorts Group | London Court | London Road | Bracknell | Berkshire | RG12 2UT
01344 620 316 | demolition@shorts-group.co.uk

